

We're Connecting Cheshire

www.connectingcheshire.org.uk

June 2015

Cheshire reaches 70,000 premise milestone

Connecting Cheshire has reached another milestone by giving access to high-speed broadband to more than 70,000 homes and businesses.

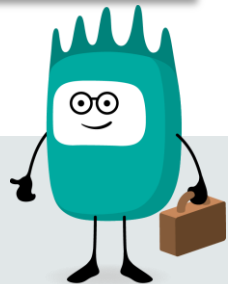
The first cabinet from the Church Minshall exchange was recently completed and is now accepting orders, providing fibre broadband to around 200 premises within the village. Further coverage in this area is expected to be completed over the summer.

One year on from the launch of the 'Fibre Guy's' marketing campaign, we've been recognised by the government as one of the best projects in the country with regards to take-up, marketing and demand stimulation.



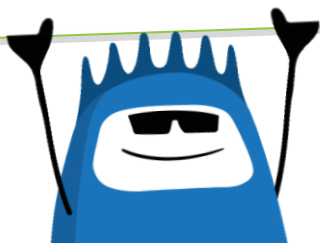
Welcome to the fibre fast lane...

Helsby, Bulkeley, Malpas, Elton, Farndon, Lymm, Pickmere and Congleton



Come and join us at:

Cheshire Show 23/4 June
RHS Show 22 – 26 July
Nantwich Show 29 July



Vote for us!



We have been nominated for an award for our work addressing digital exclusion. The 'I Made a Difference Awards' exist to recognise and celebrate the inspirational digital skills work being done by individuals and organisations as part of the Go ON North West programme. So far we've trained over 50 Digital Learning Champions to share their enthusiasm and help those offline learn basic digital skills. Please vote for us by 12th June [here!](#)

For more information contact:

katie.atherton@cheshireeast.gov.uk

Follow us! Like us!



[@SFB_Cheshire](https://twitter.com/SFB_Cheshire)



[ConnectingCheshire](https://www.facebook.com/ConnectingCheshire)



Terry finds his voice

Terry Golding, an experienced professional voiceover for TV, radio and online, recently upgraded to superfast broadband in Malpas at his home studio thanks to Connecting Cheshire. He is delighted with the difference it has made to his business:

“My broadband speed is now ten times faster, and the ability for me to finally utilise specialist broadcast IP-to-IP software means I am now able to work with many, many new clients in real time around the globe, from Chester to Canberra.”



Connect

Nearly one in three UK broadband connections are now superfast, up from around one in four in November 2013, according to Ofcom research. The average UK broadband speed is now 22.8Mbit/s

See [more](#)

Use

Highest users of the internet are in Berkshire, Buckinghamshire and Oxfordshire at 92%, whereas Northern Ireland had the highest rates of non-users at 19%. Overall 86% of adults in the UK had used the internet in the beginning of 2015

See [more](#).

Watch

People are spending twice as much time online compared to 10 years ago, from 10.5 to 20.5 hours per week, fuelled by increasing use of tablets and smartphones, according to new Ofcom research.

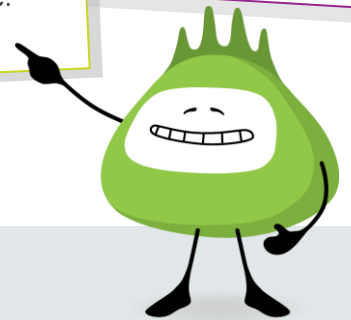
See [more](#)

Sell

57% of businesses reported upgrading to fibre enabled growth, such as offering new services like Wi-Fi to attract new customers and trading online.

Shop

Off-line households miss out on savings of £560 per year from shopping and paying bills online.



Superfast Business Programme draws to a close

Our business support programme will soon close but has been a tremendous success with over 800 small and medium sized businesses receiving 12 hours of free support to date. The Superfast Business [website](#) is still available with plenty of free advice and knowledge so please make use of it!

Our Women in Business programme also recently closed and helped over 300 female entrepreneurs with digital skills. We have submitted a bid to hopefully provide further support later in the year.

Got a story to share?

If you have something you would like us to cover in our newsletter next month please email us at:

info@connectingcheshire.org.uk

