

Survey work in your area

IGas Energy, who has been safely and successfully exploring for and producing oil and gas onshore in the UK for over 30 years, is in the process of acquiring data to build up an image of rock formations in the area.

One technique used to understand the underground geology is to undertake a seismic survey. We have commissioned a three-dimensional (3D) survey across the Ince, Stoke, Thornton-Le-Moors, Little Stanney, Elton and Frodsham Marsh areas. The data recovered will further build on our already good picture of what lies beneath our feet, obtained from two-dimensional and exploratory drilling over recent years. The quality of 3D data will allow our technical teams to see a reliable view of underground features and rock formations, and make better informed decisions about future operations.

It is proposed that the survey will start in early August and will last approximately six weeks.

The work will be conducted by TESLA Exploration Ltd, one of the largest international seismic contractors in the world with extensive experience of safely undertaking 3D land seismic surveys.

What will it involve

Seismic surveys have been a common and routine operation in the UK for over 40 years.

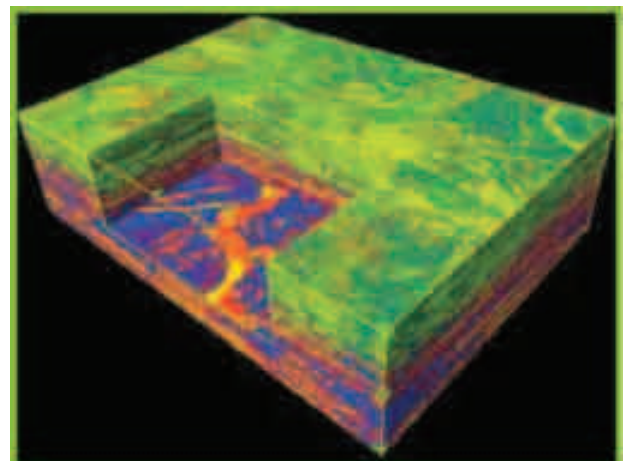
In order to undertake the surveys, a hypothetical grid is drawn over the surface area.

Within the grid, sound wave signals will travel through the various sub surface rock layers and at points where the rock type changes, reflect back to the surface.

These signals are generated by a small seismic charge mounted on a tractor or truck.

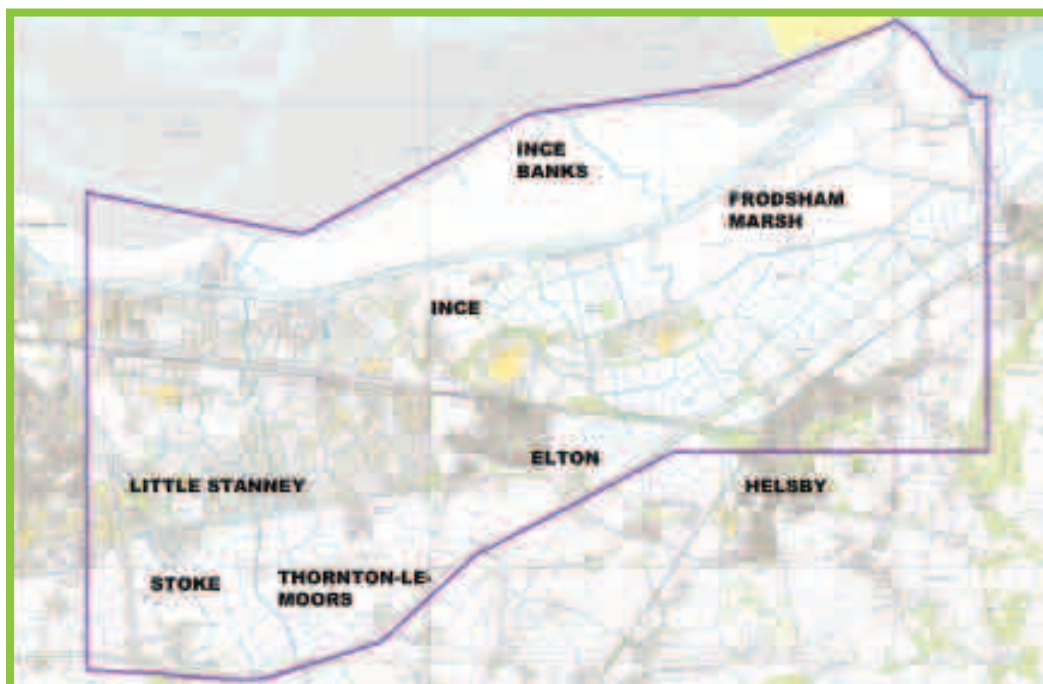
Receiver nodes positioned at the surface will detect and record the reflected frequency signals from each seismic source over a period of days before being retrieved.

The recorded data can then be processed and analysed to produce images of the underlying geological layers.



To provide you with more information, a public information day will be held at:
The Holiday Inn, Centre Island, Lower Mersey Street, Ellesmere Port, CH65 2AL
Tuesday 11 August 2015
From 3pm - 8pm

Where will the survey take place?



Further information

If you live or work within the area outlined above, why not come along to our exhibition to learn more about how seismic surveys work?

There will be friendly and knowledgeable staff from TESLA and IGas on hand to answer your queries, plus a helpful exhibition explaining how onshore drilling works.

Date: Tuesday 11th August

Anytime from: 3pm-8pm

Venue: The Holiday Inn,

Centre Island, Ellesmere Port
CH65 2AL

Frequently asked questions

Will there be traffic delays?

There will be some short delays while cars pass the vibrator convoy, but this will be kept to a minimum wherever possible. On narrow roads, Stop-Go signs will be used to keep traffic moving.

Will I feel the vibrations?

In most cases the work will take place unnoticed. Occasionally some minor vibrations may be felt, however you can be assured that the vibration levels are within statutory safety limits and no damage will be

caused to property or structures.

What checks are made to ensure there is no damage?

An independent vibration monitoring specialist will be present to ensure operations fully comply with all relevant regulations.

How noisy are the operations?

The vibration trucks have special silence units installed to minimise noise. They may appear slightly noisier than a passing lorry due to the fact that they remain stationary

for a period of one to two minutes. When charges are used a slight background muffled thud may be heard.

Why have you picked this area?

This is the first phase of our survey which will cover a wider part of the Cheshire West and Chester area. We are in the planning stages for phase two and will communicate with those local residents and businesses nearer the time.