



# We're Connecting Cheshire

[www.connectingcheshire.org.uk](http://www.connectingcheshire.org.uk)

December 2014

## Chancellor joins Superfast celebration

Chancellor George Osborne has helped give superfast broadband a boost in Cheshire East. The Tatton MP switched-on the latest fibre broadband cabinet to join Connecting Cheshire's superfast fibre broadband network in Lower Peover.

The Rt Hon George Osborne MP said: "I've been a huge supporter of getting high-speed broadband across Cheshire on behalf of the people I represent."

The work Connecting Cheshire and BT are doing, bringing additional fibre broadband to homes and businesses, is vital for the local economy. It allows people to work where they want and brings entertainment and knowledge to people and families at home."



[Read more](#)



## Welcome to the fibre fast lane...

Ashton Hayes, Glazebury, Hulme Hall, Lower Peover, Norley, Pulford, Runcorn East and Sutton



## Digital Learning Champions programme launched

### Digital Learning Champion training

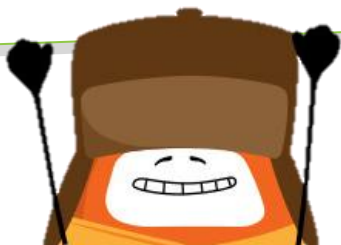
Connecting Cheshire is running a series of one-day pilot training events for Digital Learning Champions in early 2015, click [here](#) to book onto one of our courses.

Want to share your knowledge and passion for the internet with others?  
**Would you like to become a Digital Learning Champion?**

Connecting Cheshire are looking for volunteers to help others in their community get online, enjoy the benefits of the internet and gain basic digital skills. To become a Digital Learning Champion you don't need to be a technical wizard, but are able to:

- Use the Internet and email confidently e.g. searching, shopping online or using online forms
- Use a range of digital technology such as tablets, smartphones and digital cameras
- Be encouraging, empathetic and a good listener
- Give between 1 and 2 hours a week to help someone gain digital literacy skills.

To find out more about the role click [here](#), see box to the left to book a training place.



Follow us! Like us!



[@SFB\\_Cheshire](#)



[ConnectingCheshire](#)



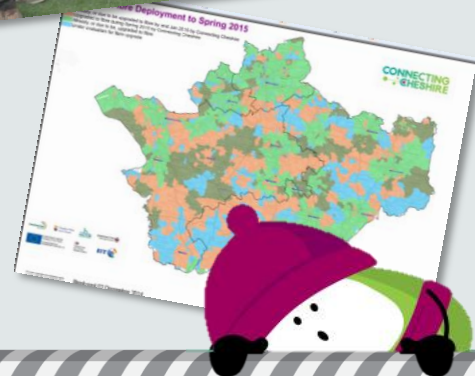
# Happy 1<sup>st</sup> Birthday

It's been a year since our first cabinet was upgraded to fibre in Holmes Chapel as part of the Connecting Cheshire roll-out. Since then, we've held 30 Fibre is Here events, installed and switched on over 270 green roadside cabinets and reached almost 50,000 additional homes and businesses with fibre broadband, bringing more than 80 per cent coverage to Cheshire, Halton and Warrington.



We've just published new maps so you can see for yourself how far Connecting Cheshire's roll-out has reached to date.

If you're in a green area, why not enter your telephone number or postcode into our new [online checker](#) to find out if you can upgrade to fibre broadband now and what speeds you can expect to get.



## Fibre Guys Christmas Caption Competition

To be in with a chance to win a fibre optic Christmas tree, get your creative caps on and send us a caption for this photo.

You can enter the competition via our [Twitter](#) or [Facebook](#) channels. Alternatively you can email us at [info@connectingcheshire.org.uk](mailto:info@connectingcheshire.org.uk)  
**Closing Date Friday 19<sup>th</sup> Dec**

*The tree is 0.6m tall.  
Sorry Fibre Guys not included!*



## Latest Fibre Guys video

See what Superfast fibre broadband could give to you with our new:  
[12 days of Fibre video](#)

## It's not just for Christmas...

The gift that keeps on giving - a present that the whole family will love; and, what's more, it doesn't need batteries! Superfast broadband makes a great gift for Christmas – and the good news is it's becoming available to more and more homes and businesses across Cheshire every week.

Residents in Glazebury, Hulme Hall, Norley and Runcorn East joined in the festive fun as we celebrated with over 1,400 homes and businesses now able to enjoy the benefits and do more online with fibre broadband in time for Christmas.



**Follow us! Like us!**



[@SFB\\_Cheshire](#)



[ConnectingCheshire](#)

# helping you do more



## Christmas came early for the Cliff family

Jacq lives in Kingsley with her partner and three primary school aged daughters. "With the speed allocated to us we had been unable to utilise any kind of film streaming or iPlayer. To watch anything on You Tube involved sitting down with tea and biscuits - and a lot of patience! I think as a family we gave up a bit on technology, so I watched with interest as the Connecting Cheshire project and on our village website and Facebook groups where it was heavily promoted. Through the Connecting Cheshire Facebook group, I was able to find out when fibre was available and placed my order straight away. The difference has been amazing. We no longer have to wait for any of our devices to connect, and it turns out our smart TV has functions other than Freeview!"



[Read their full story](#)

### Learn

Remembering family members present and past this Christmas? Tracing your family tree has never been easier with census results, parish records and other resources online. Here are the best [websites and apps](#) to get you started.

### Sell

Christmas 2014 is on track to be another record breaker for online retailers in the UK. On Black Friday there were 180m online visits to UK retail sites spending a total of £810m and a further £720m spent on Cyber Monday.

### Play

43% of tablet owners spend more time with their tablets than their TVs or PCs, and 84% spend most of their time playing games on them.

### Connect

See a review of the 10 best [video calling apps](#) to connect you with family and friends this Christmas.

### Shop

From smart coffee pots to a thermostat that adjust the temperature when it knows you're on your way home, here's a look at some of the [top smart gifts](#) for the home this season - another reason to upgrade to fibre broadband.

## Business Support Update



### Women in Business

Our new Women in Business programme has got off to a flying start helping, over 70 businesses to date.

Jen Hinds, Lead Business Advisor, above, said: "The feedback we've had from the [events](#) so far has been great. With a variety of [courses](#) available it's provided Cheshire's business women with an ideal opportunity to gain new skills, confidence and learn a lot more about networking and productivity. Don't just take our word for it, sign up and see for yourself."

[Find out more](#)

### CC Superfast Business

In the last 13 months over 400 companies have received independent and impartial IT advice and support delivered by the Connecting Cheshire Superfast Business programme.

In addition 2,000 companies have also benefited by accessing the [Knowledge Hub](#) – access free content providing insight into the latest thinking and technology from industry experts, businesses and suppliers. For top tips, videos, case studies, blogs, white papers and much more please visit [www.ccbusiness.co.uk](http://www.ccbusiness.co.uk) and click on "Knowledge."



EUROPEAN UNION  
Investing in Your Future  
European Regional  
Development Fund 2007-13



Department  
for Culture  
Media & Sport

**SUPERFAST  
BRITAIN**

